



# RICH'S REFLECTION

Due to the Holiday break, Heather asked for this message a little earlier than normal. This is the last week of classes and besides giving my last lecture for the semester, yesterday I attended three events that give me cause for concern and optimism. Yesterday I attended the research seminar for the third candidate interviewing for the Landscape Ecology position. Attendance for these seminars has not been very good, but there has been very low participation from the Horticulture Department. I assume this is because the position is more likely to go to Forestry, but the successful candidate will likely choose the department that shows the most interest. Each candidate has a meeting with

Forestry faculty, but not Horticulture faculty because there was too little interest to arrange a meeting. I am a traditional Horticulturist and I would prefer to be able to hire horticulturists rather than hire faculty that can't teach our core courses and whose area of research is on the fringes of our discipline. But the reality is that for several years there will be few new positions in the college and most of those positions will be highly leveraged interdisciplinary positions. Some of the candidates have backgrounds that would fit fairly well into our department and they could develop new courses that our students would benefit from. If we have opportunities in the future to participate in in-

terdisciplinary searchers, I hope the department will be more active.

On a related topic, yesterday was our last departmental seminar for the fall semester. Over the past few years, seminar attendance has been disappointing. This fall attendance was good for some seminars, but not for others. Especially disappointing is the lack of faculty participation because this sends the wrong message to our students. When I was a student, everyone attended every seminar because it was expected. Faculty and students have told me that they don't attend seminars that are not related to their area of research.

—Continued on Page 2—

## ADVISING CENTER NEWS

By: Paige Thomas

Classes for Spring Semester, 2011 begin on Monday, January 10. Please contact your advisees early in the semester to make sure they have an appropriate schedule for spring. If adjustments need to be made, that needs to be done no later than January 19. After January 19, any class a student drops will count as late drop.

The College of Ag Sciences' Scholarship Application Form will be available for students to fill out in January. Please get the message out to your advisees TO APPLY. It's shocking that many of our students with cumulative grade point averages above 3.0 don't bother to fill out the simple on-line application. If a student

does not fill out the application form, he/she will not be eligible to receive a scholarship from the Department of Horticulture nor from the College of Ag Sciences. The web address to fill out the scholarship application is:

<http://students.cas.psu.edu/>

Follow links to Scholarships.

### Inside this issue:

Rich's Reflection (continued)	2
Hort CRSP Announcement	2
HORT Grad Featured in Local Newspaper	3
Department Birthdays	3

### Calendar of Events:

- January 10—Spring Classes Begin
- January 10—Add/Drop Period Begins
- January 17—Martin Luther King Day (No Classes)
- January 19—Drop Period Ends
- January 20—Add Period Ends/Late Drop Begins
- January 24—Last Day to File Intent to Graduate

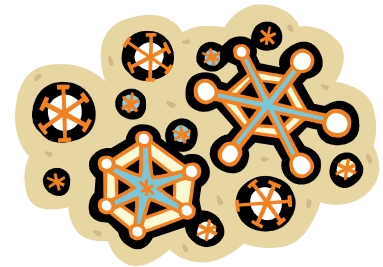
## —Continued from Page 1 (Rich's Reflection)—

As we have become more specialized, I think the need to attend seminars outside our area of expertise is more important than ever. Seminars give us an opportunity to broaden our knowledge and learn about areas that they we know very little. Part of our problem is that about half of our grad students are in interdisciplinary programs that have their own seminar series, but they should still be encouraged to attend our departmental seminars. It is embarrassing to invite speakers from other departments and universities and have poor attendance. When I suggested dropping our seminar series, there was general agreement that we should continue it. However, I don't want to continue it if attendance remains poor.

Yesterday I also attended the semi-annual

Board of Directors meeting of the PA Vegetable Growers Association (PVGA). This is always a good meeting because they are well organized and want to cooperate with our Department. Much like the State Horticultural Association of PA (SHAP), they provide some financial support for our extension and research programs. They had an interesting philosophical discussion about the use of IT in our extension programs. Most want us to use more electronic technologies, such as webinars, for information dispersal. However, they also realize that a number of vegetable growers don't have electricity and we have to find ways to accommodate them. This difference in lifestyles presents some challenges for our extension workers that I did not have to deal with in other states where I previously

worked. PVGA members have also been following the results of our mid-Atlantic specialty crop research initiative planning grant and they are using the information. They are interested in partnering with us to develop a similar proposal for a SCRI block grant from PDA to conduct a strategic planning workshop for vegetable growers to facilitate growth and profitability of the PA vegetable industry. If this activity is successful, I hope we can use this as a model to help move our other horticultural commodity groups forward.



## Hort CRSP Announcement

Dr. Ricky Bates has been awarded a USAID, Horticulture CRSP grant for a joint project entitled "Strengthening Indigenous Informal Seed Saving Systems in Southeast Asia". Collaborators include Maejo University and the NGO ECHO Asia, both in Chiang Mai, Thailand. The three institutions will carry out a study of the informal seed systems and seed saving practices in hill tribe communities along the Thai-Burma border as well as Khmer farming communities in

Cambodia. The funding will enable the CRSP grant partners to develop germplasm maps of important underutilized perennial and annual vegetable species, develop a regional seed bank, and address local challenges to seed saving. Other Co-principal Investigators include Dr. Tom Gill at PSU, Dr. Yongyuth Srigiofun at Maejo University, Dr. Laura Yoder and Dr. Abram Bicksler at the International Sustainable Development

Studies Institute in Chiang Mai and Rick Burnette at the ECHO Asia Regional Office. Other key logistical partners in the study are the Upland Holistic Development Project, based in Chiang Mai, as well as the Wholistic Development Organization in Phnom Penh.



## Congratulations to Jim Schupp!

**Dr. Jim Schupp, Associate Professor of Pomology and interim Director of the Fruit Research & Extension Center in Biglerville, has been appointed as Director of the FREC starting January 2011.**



*Dr. Jim Schupp*

**Visit us on the Web  
[horticulture.psu.edu](http://horticulture.psu.edu)**

## HORT Grad Featured in Local Newspaper

Stacee Frost, a 1997 graduate of Penn State with a degree in Horticulture, was recently featured in a story in the Centre Daily Times.

Frost, who lives in Anchorage, Alaska, is one of 10 finalists competing for the title of Most Extreme Huntress in a contest sponsored by Tahoe Films, Prois Hunting Apparel and the television show "Primal Adventures," which airs on the Versus network.

Contest participants submitted essays about their hunting experiences. The public can vote for the contestants at [www.tahofilm.com](http://www.tahofilm.com) through Jan. 1. The grand prize winner will be introduced at the Prois booth at the SHOT

Show in Las Vegas, and will receive a package valued at \$20,000 to hunt for estate red stag, free-range chamois and tahr and fallow buck with Frasier Safaris New Zealand.

Read more: <http://www.centredaily.com/2010/12/22/2416125/state-college-native-in-finals.html#ixzz1AB7RXJtT>



Stacee Frost with a Stone Sheep taken in August 2010



## Congratulations to Jochua and Chisale!

**Congratulations go out to Virginia Chisale and Celestina Jochua !**

**Virginia Chisale successfully passed her Master's Thesis defense on December 15th. Her advisor is Jonathan Lynch.**

**Celestina Jochua successfully passed her Ph.D. Thesis defense in December. Her advisor is Jonathan Lynch.**

## Department Birthdays

January 17—Siela Maximova

January 18—Margaret Hoffman



This publication is available in alternative media on request.

The Pennsylvania State University is committed to the policy that all persons shall have equal access to programs, facilities, admission, and employment without regard to personal characteristics not related to ability, performance, or qualifications as determined by University policy or by state or federal authorities. It is the policy of the University to maintain an academic and work environment free of discrimination, including harassment. The Pennsylvania State University prohibits discrimination and harassment against any person because of age, ancestry, color, disability or handicap, national origin, race, religious creed, sex, sexual orientation, gender identity, or veteran status. Discrimination or harassment against faculty, staff, or students will not be tolerated at The Pennsylvania State University. Direct all inquiries regarding the nondiscrimination policy to the Affirmative Action Director, The Pennsylvania State University, 328 Boucke Building, University Park, PA 16802-2801; Tel 814-865-4700/V, 814-863-1150/TTY.