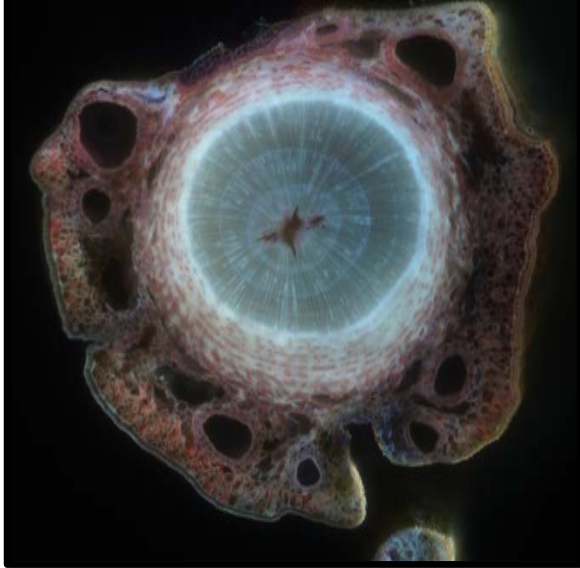


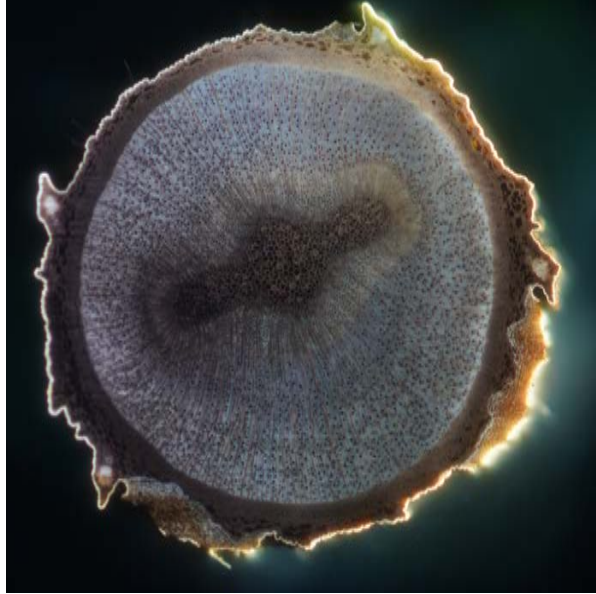
Ablation of Various Tissues with Laser

- Unless specified, tissues from woody species are from previous last 1-2 years stem tissue growth.

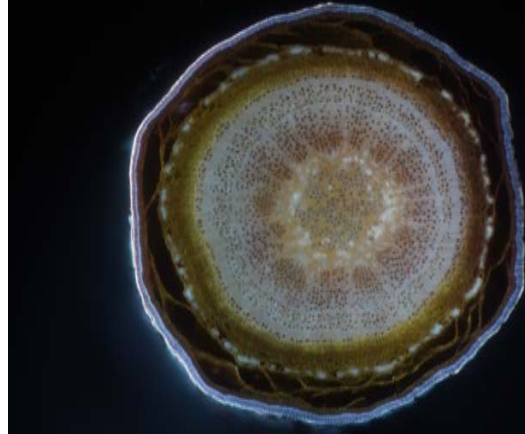
Alaskan Weeping Cedar



Boxwood



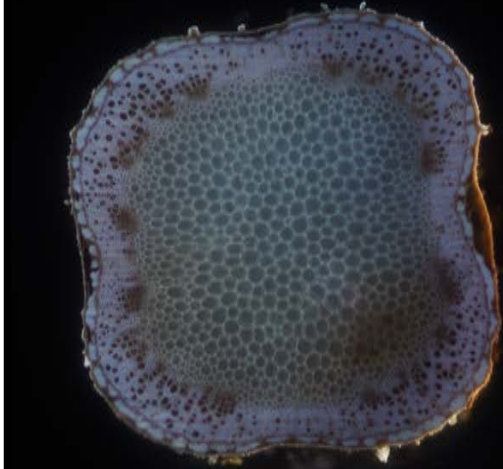
Crabapple



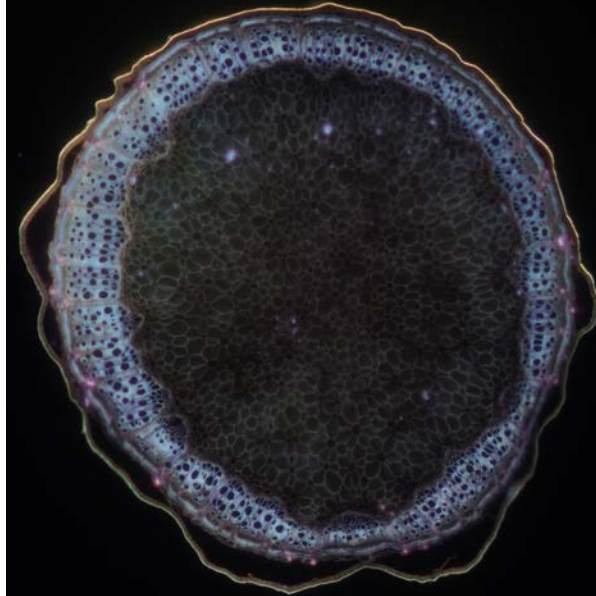
Red Twig Dogwood



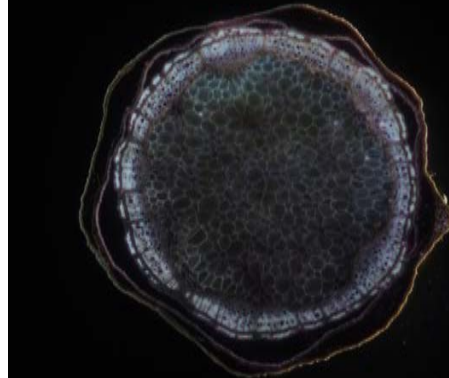
Beautyberry



Black Raspberry



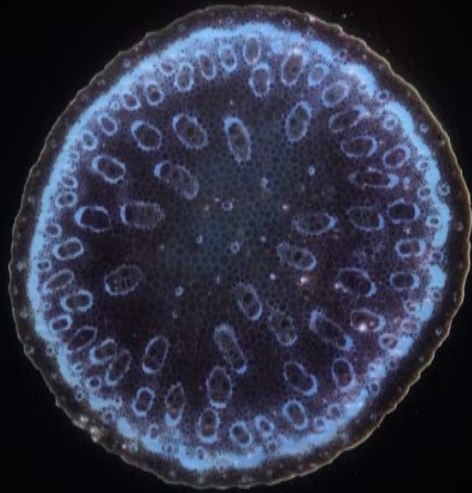
Red Raspberry



Holly



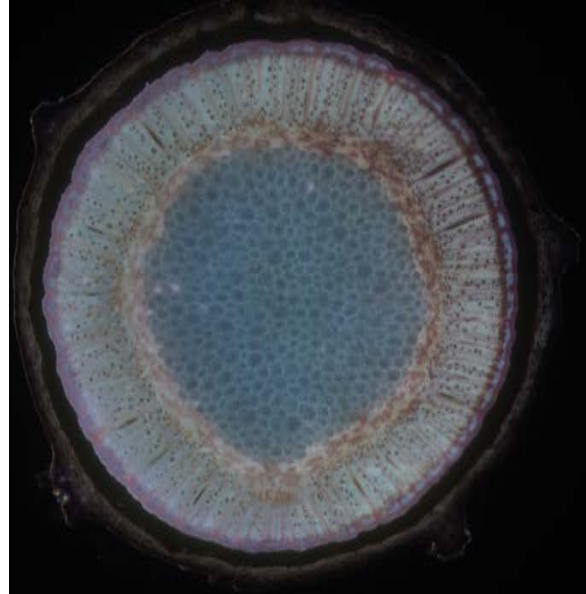
Catty Nine Tails



Lambs Quarter



Spirea



Key Lime (spine)



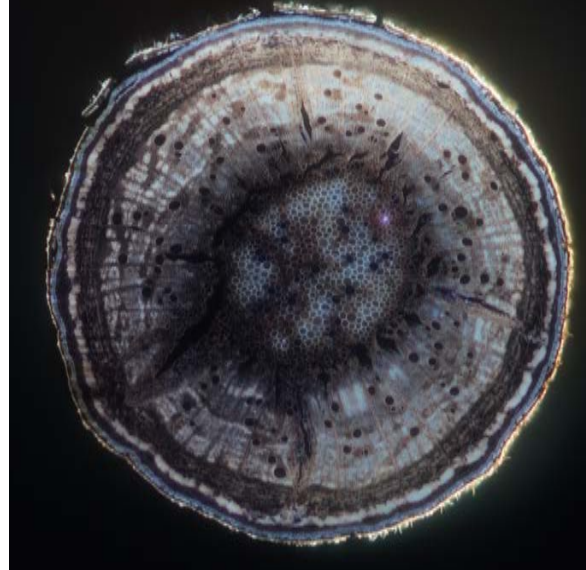
Fern Stem



Amaranth



Wisteria



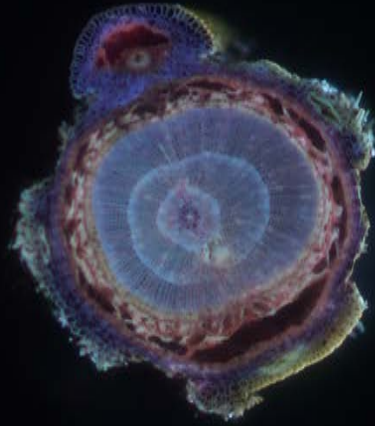
Cycas Petiole



Frasier Fir (stem)



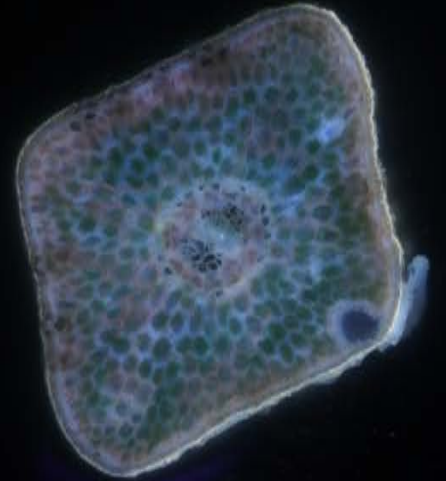
Hemlock (stem-green)



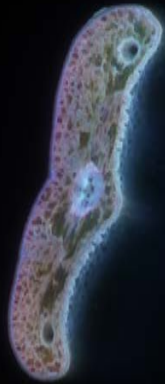
Yew (stem)



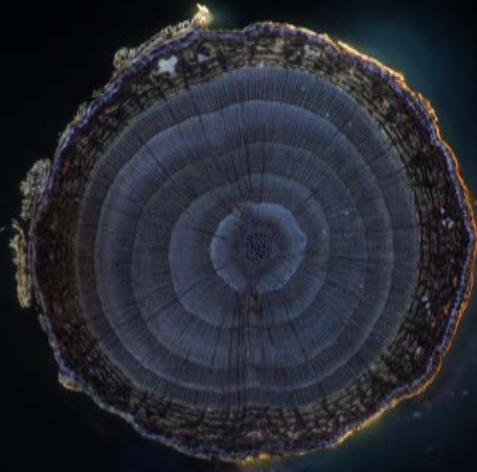
Blue Spruce (needle)



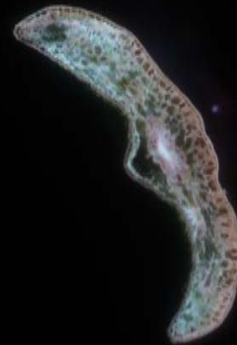
Frasier Fir (needle)



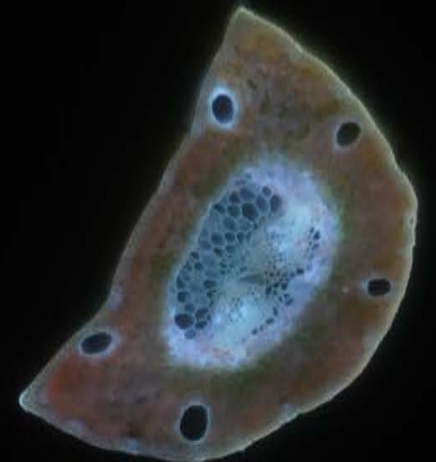
Hemlock (stem-dead)



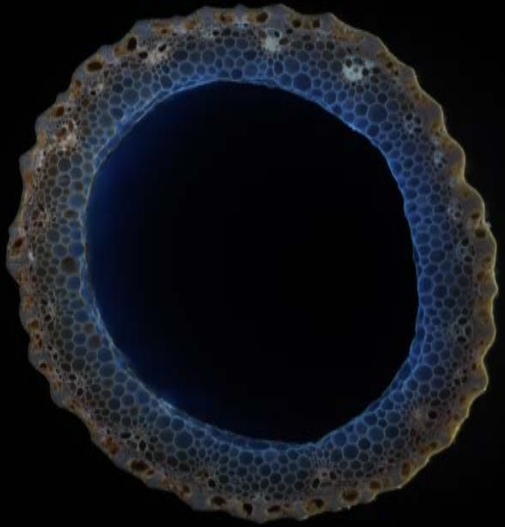
Yew (leaf)



Pine (needle)



Wheat Stalk



Wheat Stalk with Leaf



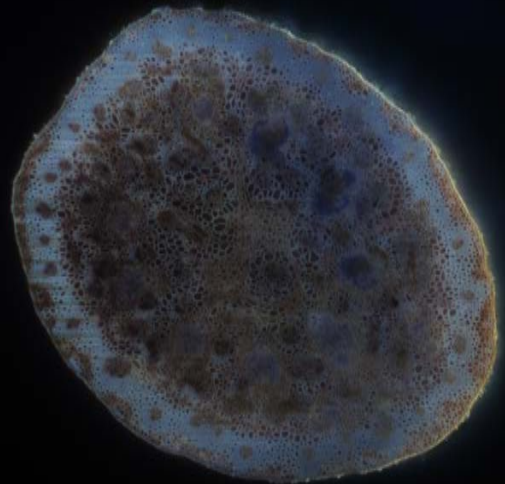
Wheat Head



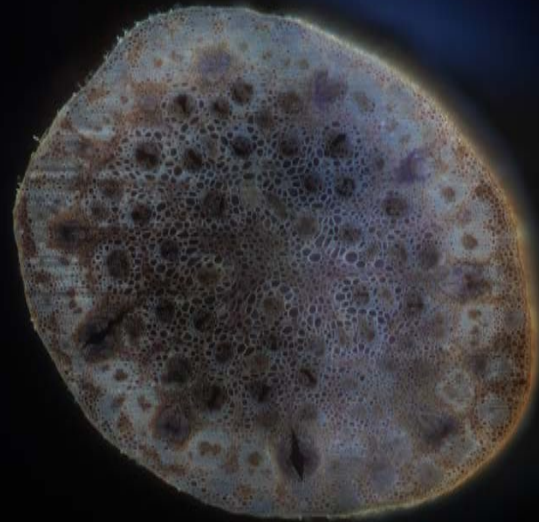
Wheat Head



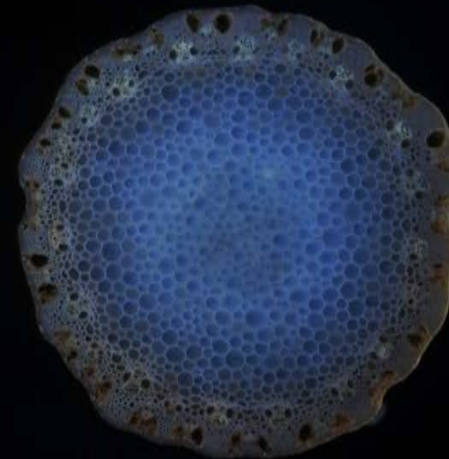
Wheat Stalk (Internode)



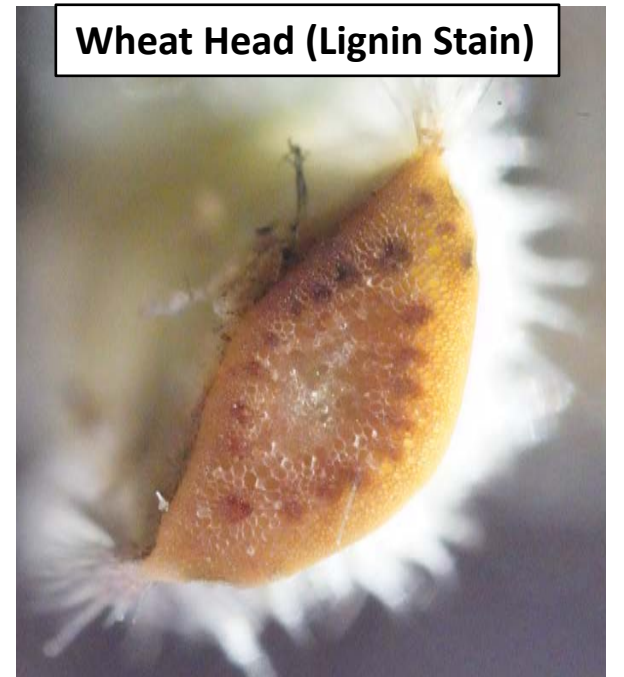
Wheat Stalk (node)



Adjacent to Wheat Head



Wheat Head (Lignin Stain)



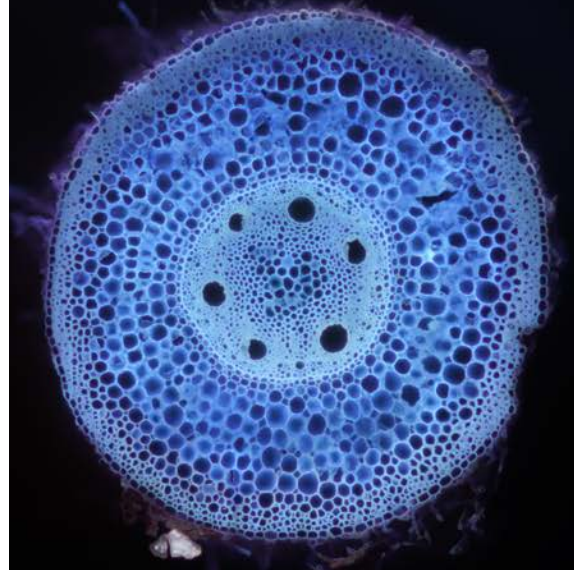
Ornamental Grass Stalk



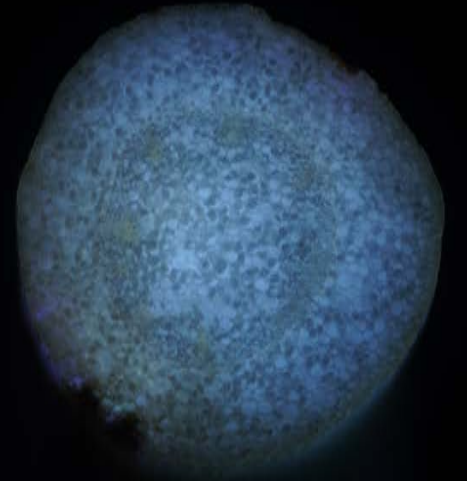
Rice Stalk



Maize



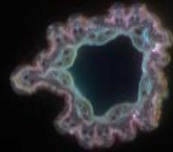
Yard Grass Root



**Ornamental Grass Stalk
(Lignin Stain)**



Rice Stalk (head)



Maize (Lignin Stain)



Cedar Stem



